



PBS NEWSHOUR

STUDENT REPORTING LABS

PBS NewsHour Student Reporting Labs Tutorial Assessment: Been there, lit that

1. In your own words, explain why good lighting is necessary for a good video.

2. Using the space below, explain what it means to white balance your camera and why it's necessary.



Select the best camera setting for the following scenarios.

3. It's a cloudy day and you've been assigned to shoot the championship Little League game. Which white balance setting would you use during your shoot and why?

4. You've been assigned to produce a story about your school's new farm-to-table lunch program. You walk in and notice there's a ton of overhead fluorescent lighting. (Ugh.) Which white balance setting would you use to counter that not-so-appealing glow?

5. You've shot b-roll of your local beekeeper collecting honey, but it starts to rain and you have to move your interview indoors. You've already white balanced your camera for natural lighting (sun), do you need to change your white balance settings now that you're going inside? Explain.

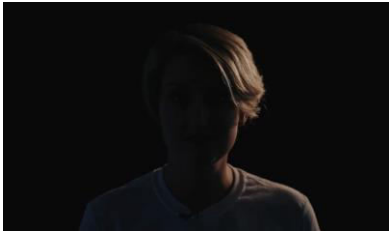
6. The standard way to light a subject is called:

- a.** key lighting **b.** fill lighting **c.** three-point lighting **d.** softbox lighting

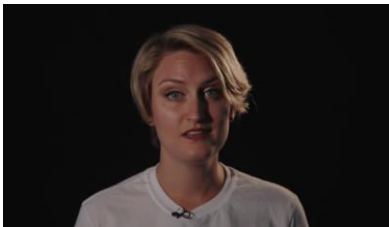
7. Which of these lights is not part of the standard three-point lighting setup?

- a.** key light **b.** backlight **c.** fill light **d.** background light

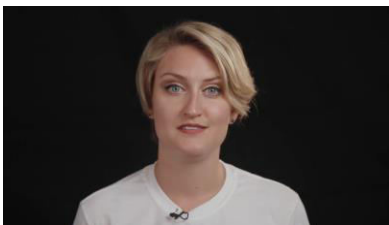
8. Write the name of the light and its function:



_____ light : _____



_____ light : _____



_____ light : _____

9. Backlit is when:

- a. The subject is brighter than your background.
- b. The background is brighter than your subject.
- c. The subject and background are lit the same.

10. Explain how you can avoid having your subject from being backlit when shooting outside?

11. After watching the tutorial video, what are some items you can use to diffuse light? Choose all that apply:

- a. diffusion paper
- b. flag
- c. umbrella
- d. soft box
- e. bounce board